

### Quick Start

**NOTE: Connect VGA monitor (HK-RA204/HK-RA204P) and mouse before starting.**

1. Overview
2. Front Panel Description
3. Connection
4. Startup
5. Recording
6. Playback Files
7. Backup Files

**NOTE: For more detailed information, refer to the Users Manual on the CD-ROM. You must use your PC or MAC to access the files.**

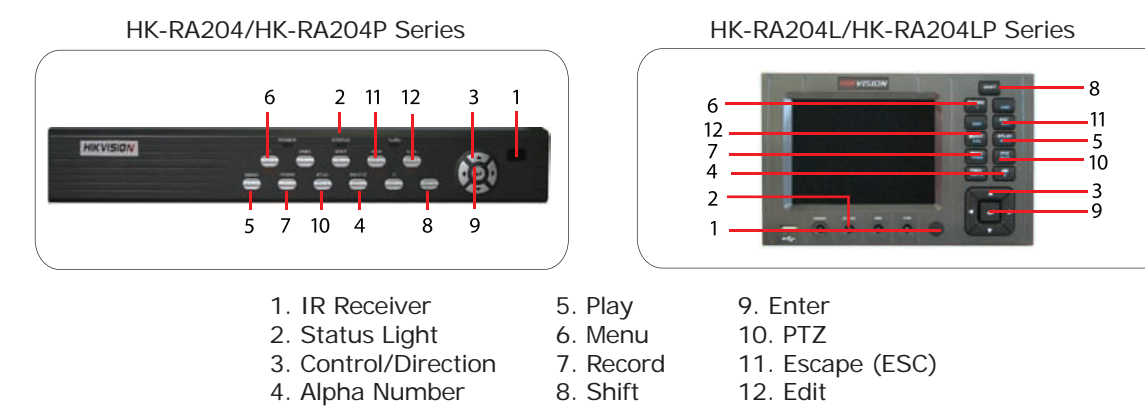
## 1. Overview

Check that your package includes the following:



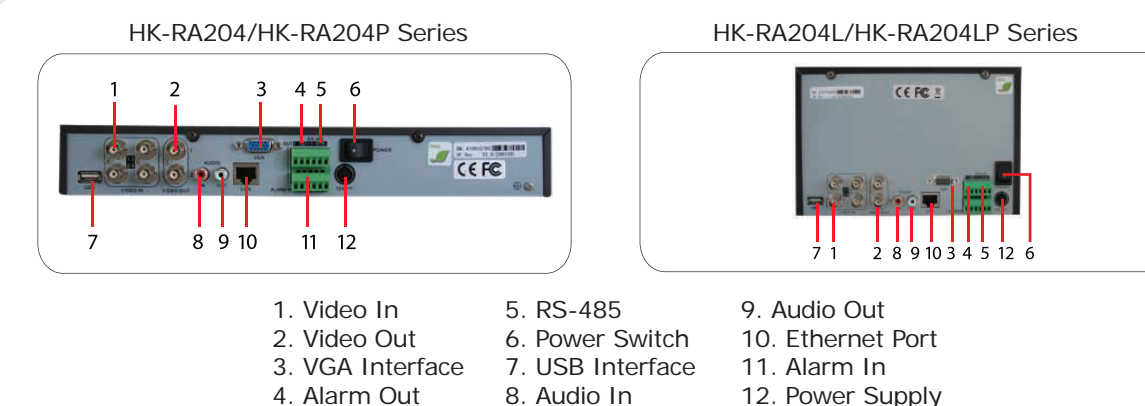
## 2. Front Panel Description

Front Panel Description:



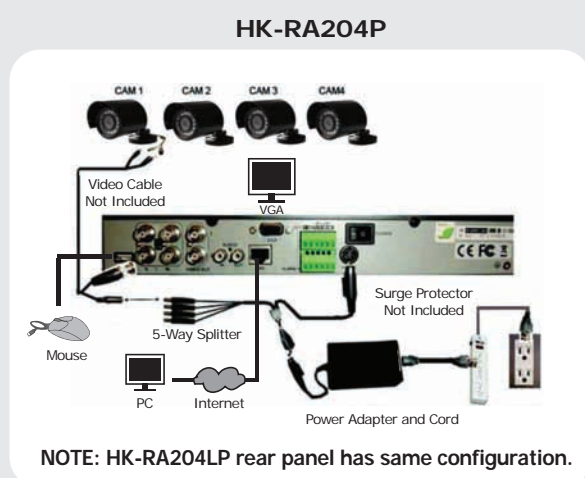
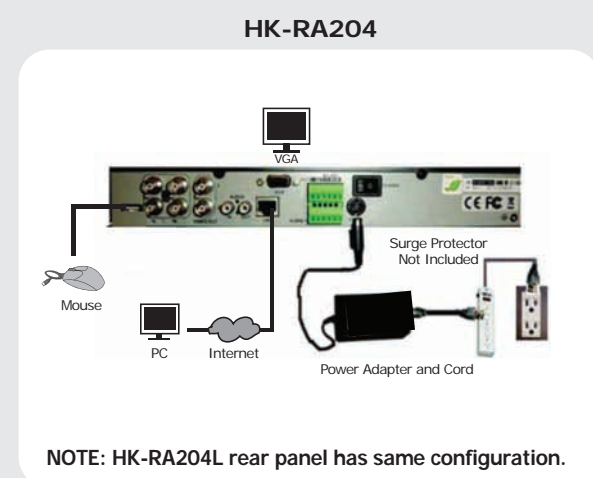
## 3. Connection

Front Panel Description:



## Connection (cont.)

1. Connect extension video cable and power cable to camera (cable not included)
2. Connect video end of cable to DVR, and connect the power end of cable to the 5 way splitter
3. Repeat the same process for cameras 2-4
4. Connect 5 way splitter to DVR
5. Connect 5 way splitter to DC adapter, and then connect adapter to a power source



NOTE: HK-RA204L rear panel has same configuration.

NOTE: HK-RA204LP rear panel has same configuration.

### CAUTION

Use only the power adapters supplied in the package. We recommend plugging the DVR and Cameras into a Surge Protector, (UL-449 Rating) \* 330 or lower clamping voltage, Joule rating 400.

## 4. Startup

Press the [Menu] button on the front panel or right click the Mouse to display the "Login" window, shown as Fig.1-1, and enter the admin password: 12345.

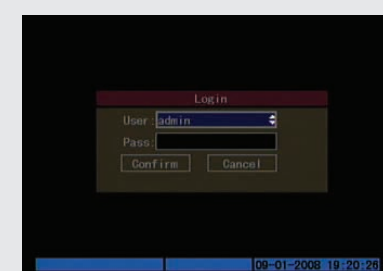


Fig. 1-1 - Log In

It will display the Main Menu window, shown as Fig.1-2. Use the Direction Buttons or Mouse Wheel to move the cursor.

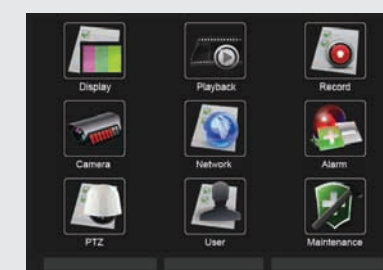


Fig. 1-2 - Main Menu

## 5. Recording

Use the Direction Buttons to navigate to the "Record" icon and press [Enter] to enter the "Recording" interface, shown as Fig.1-3. Check the boxes for the cameras that you want to record. You can setup the record stream type, resolution, and frame rate for the cameras in this interface.

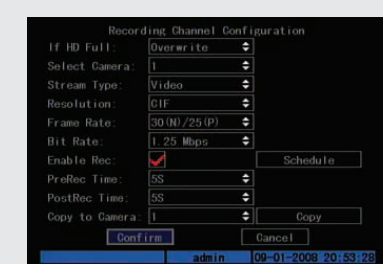


Fig. 1-3 - Recording Channel Configuration

## Recording (cont.)

There are 3 Types of Recording:

### 1. Manual Recording

In preview mode, press the [Rec] button, select the user name and input the correct password (Default password of Admin is: 12345), you can enter the "Manual Record" interface shown as Fig.1-4.

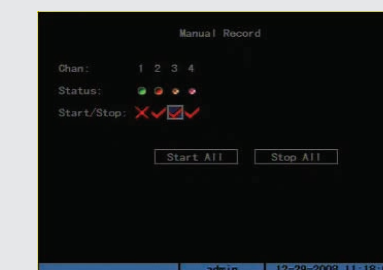


Fig. 1-4 - Manual Record

After you return to the preview screen the record line "REC" on the bottom of the screen will be pink, shown as Fig.1-5.



Fig. 1-5 - Recording Status

### 2. Motion Detection Recording

Enter the Main Menu and select the "Camera" icon, shown as Fig.1-6. Select the camera (White Square). Navigate "Motion Det. Level" (Red Square), and set it to 2 or 3 (normal). Go to AREA (blue square) Fig. 1-7 and push [PTZ] button to select the entire area and push [ENTER] to exit. Next go to [COPY] (yellow square) to copy to all cameras and click [CONFIRM]. You have to go back to each camera to setup the AREA for each camera. Return to Main Menu.

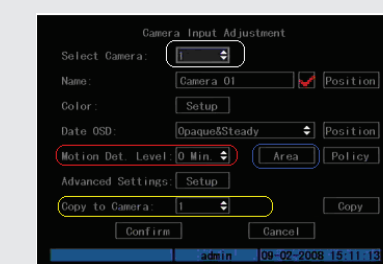


Fig. 1-6 - Motion Detection Configuration

## Recording (cont.)

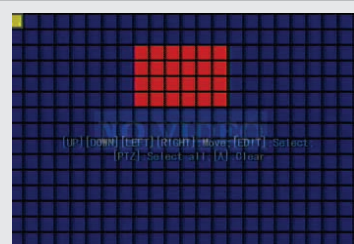


Fig. 1-7 - Motion Detection Area

Now, navigate to the "Recording" interface, shown as Fig.1-8. Navigate to "Enable Rec" (Red Square) and check the box. Navigate to "Schedule" and press [Enter] (Blue Square), shown as Fig1-9. Select one day or Select "All Day" for the day. Set the "Rec. Type" to "Motion Detection" (Green Square). You can copy this schedule to "All Days" or any individual day by selecting the day and press [Copy] (Blue Square). Press [Confirm] to save the settings and exit.

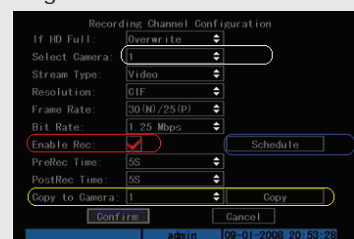


Fig. 1-8 - Recording Channel

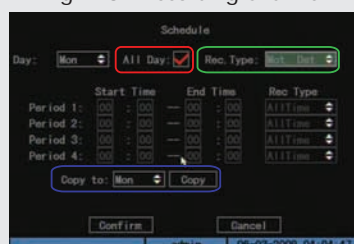


Fig. 1-9 - Rec. Schedule

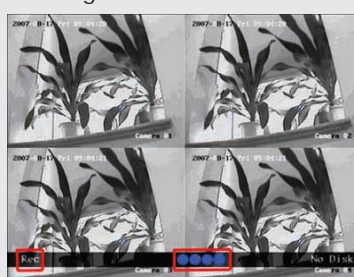


Fig. 1-10 - Rec. Status

Restart the DVR. When the DVR records on Motion, the light at the bottom "Rec" line will be Blue, shown as Fig.1-10.

## Quick Start Guide

## Recording (cont.)

### 3. Time Schedule Recording

Enter the Main Menu and go to the "Recording" interface, shown as Fig.1-11. Navigate to the "Enable Rec" box (Red Square) and check it.

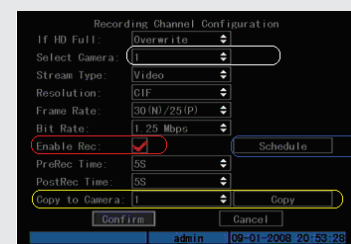


Fig. 1-11 - Recording Channel Configuration

Navigate to "Schedule" (Blue Square), shown as Fig1-12. Select an individual day and check the box next to "All Day" to record the whole day. (Red Square). The "Rec. Type" can be set to "All Time" (Green Square). Copy this schedule to "All" days or an individual day by selecting the appropriate option (Blue Square) and clicking [Confirm].

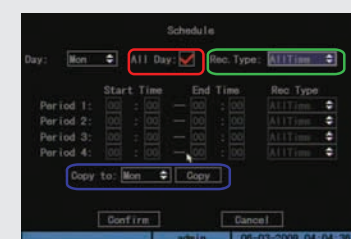


Fig. 1-12 - Rec. Schedule

When the schedule starts recording, the "Rec" line will be green, shown as Fig.1-13.



Fig. 1-13 - Rec. Status

# Quick Start Guide

DS-7204HVI-S, DS-7204P, DS-7204AHLI-S

Version 2.0

**NOTE:** For more detailed information, refer to the Users Manual on the CD-ROM. You must use your PC or MAC to access the files.

## 6. Playback

In preview mode, press the [Play] button, if the system is password protected it will ask for a user name and password. (Default password of Admin is: 12345), you can enter the playback interface, shown as Fig.1-14. Select the camera you want to playback (Red Square). Click the [Search] button to display the files (Yellow Square). Select the file you want to play (Blue Square), Press [Enter].

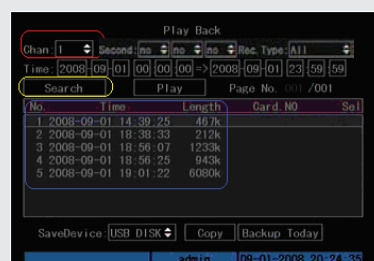


Fig. 1-14 - Playback Search

### Notice

You can select secondary cameras for multi-channel playback.

File will start to play, shown as Fig.1-15. The bar at the bottom of the screen shows you the progress of the file playback as a percentage (Red Square), the playback speed (Yellow Square), how far along in you are in the file in minutes/seconds, and the total length of the file in minutes/seconds (Green Square). Adjust the playback speed using the up and down arrows on the front panel. Press [Escape] to return to the file list.

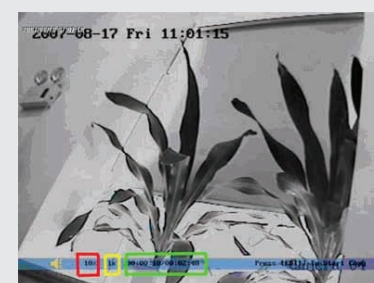


Fig. 1-15 - Playback

## Quick Start Guide

## 7. Backup

Insert a USB DVD/CD-RW drive, USB Hard Drive, or USB flash into the USB port on the back of the DVR. Enter the Playback Interface and select the camera and files you want, shown as Fig.1-16. Press the [Edit] button and it will put a check mark on the file (Blue Square). Do this for all the files you want to back up. Next to "Save Device" select a USB CDRW/ DVDRW, USB HD, or USB Disk Purple Square). Click [Copy] (Orange Square) to begin backup. A Progress Bar will be displayed. When the backup is complete, a dialog box will appear as "Backup Complete".

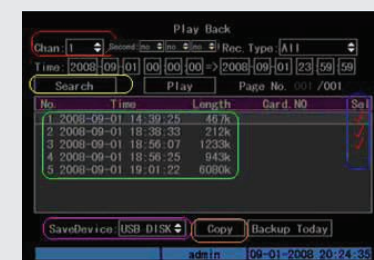


Fig. 1-16 - Backup Files

### Notice

To play back the backup files, you need to install the FILE PLAYER program onto your PC. This program comes on the installation CD. You will need to connect your USB backup device to your PC then run the File Player to play back the files.

# HIKVISION USA, Inc.

A Division of Hikvision China

565 Brea Canyon Road, Suite A  
Walnut, California 91789  
techsupport@hikvision-usa.com